



## Radiology Pic of the Day on Instagram



### Radiology Pic of the Day on Instagram

There are various ways of disseminating knowledge and sharing cases. People use WhatsApp, email, Facebook and Twitter. One good way of sharing single images or composite images is Instagram.

On the Instagram handle [bjankharia](https://www.instagram.com/bjankharia/) or <https://www.instagram.com/bjankharia/>, we now post daily pictures of interesting cases from Monday to Friday. These are also auto-posted to Facebook and Twitter.

#### A few examples:

##### Case 1: (Figure 1) May Thurner Syndrome -

<https://www.instagram.com/p/BOhe80lgiVg/>

This 50-years old presented with left iliac vein thrombosis. A multiphase contrast MRI angiogram was performed. The angiogram and venogram phases have been superimposed with the right common iliac artery in red, compressing the left common iliac vein (red arrow). This is the May-Thurner syndrome.

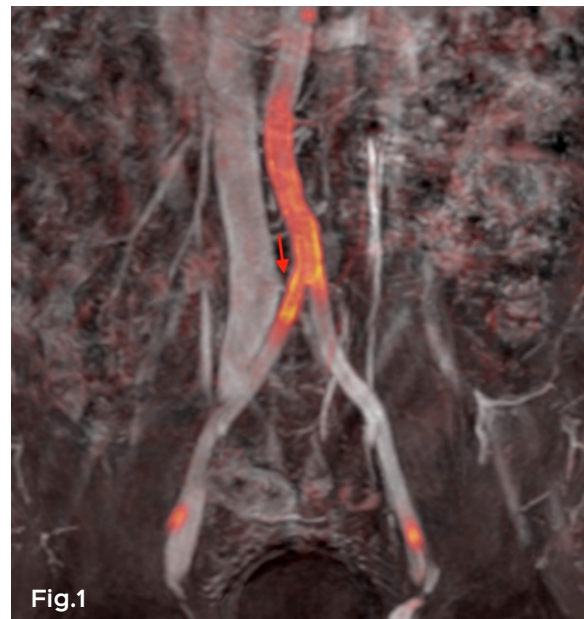


Fig.1

##### Case 2: (Figure 2) Supraspinatus & Subscapularis Tears -

<https://www.instagram.com/p/BOe3KjKglvD/>

Subscapularis tear along with a supraspinatus tear. This 33-years old has a full thickness supraspinatus tear following trauma (arrow middle image). What can get easily missed is a full-

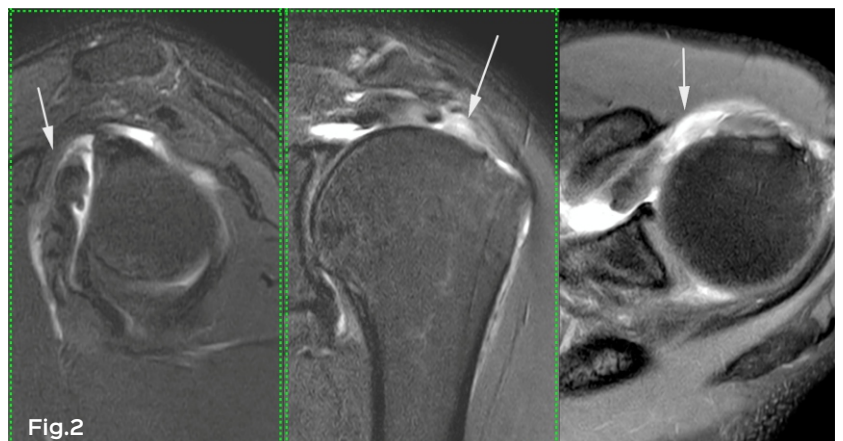
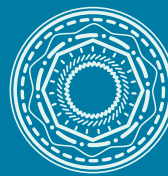


Fig.2

*At a glance*

- Dissemination of knowledge and information in today's day and age is easy and simple
- Among various modalities, Instagram allows a good

way to share interesting cases

- Please follow us on the Instagram handle [bjankharia](https://www.instagram.com/bjankharia) or <https://www.instagram.com/bjankharia/>

thickness tear with retraction of the superior fibres of the subscapularis (arrows in the left and right images).

**Case 3 (Figure 3) Ischiofemoral Impingement -**

<https://www.instagram.com/p/BOzlwIPAQst/>

This 9-years old boy has bilateral hip pain. His x-ray of both hips shows mild coxa valga. Rest is fine. The MRI shows coxa valga. It also shows edema of both quadratus femoris muscles along with significant reduction in the ischiofemoral space and the quadratus femoris space.

This is classic ischiofemoral impingement.



Fig.3

**Case 4 (Figure 4) Extramedullary Hematopoiesis -**

<https://www.instagram.com/p/BO2HlmvAFpD/>

This 19-years old with thalassemia major came with dorsal pain.

An MRI of the dorsal spine was performed. It shows extensive extramedullary hematopoiesis (EMHT). While this is not uncommon, seeing foci of EMHT in the posterior epidural space of the dorsal spine, the pre-sacral region and the sacral epidural space, is quite uncommon. He currently does not have neurologic symptoms.



Fig.4

Subscribe to INNER SPACES : [info@jankharia.com](mailto:info@jankharia.com)

Online version : <http://picture-this.in/index.php/inner-spaces/>

**Main Clinic**

383 | Bhaveshwar Vihar | Sardar V. P. Road | Prarthana Samaj | Charni Road | Mumbai 400 004 | T: 022 66173333 | F: 022 2382 9595

**Cardiac, Chest & Interventional CT**

461 | Nishat Business Centre | Arya Bhavan | Sardar V. P. Road | Mumbai 400 004 | T: 022 2380 2172 | 022 2389 3551 / 2

**PET / CT, Organ Optimized 3T MRI**

Gr. Floor | Piramal Tower Annexe | G. K. Marg | Lower Parel | Mumbai 400 013 | T: 022 6617 4444

Owner, Printer & Publisher: Dr. Bhavin Jankharia

Published at: Dr. Jankharia's Imaging Centre

Bhaveshwar Vihar, 383, S.V.P. Road, Prarthana Samaj, Charni Road, Mumbai 400 004.